

100 Gbps multiprotocol Aggregation from STM-4 up to 40 Gbps Ethernet

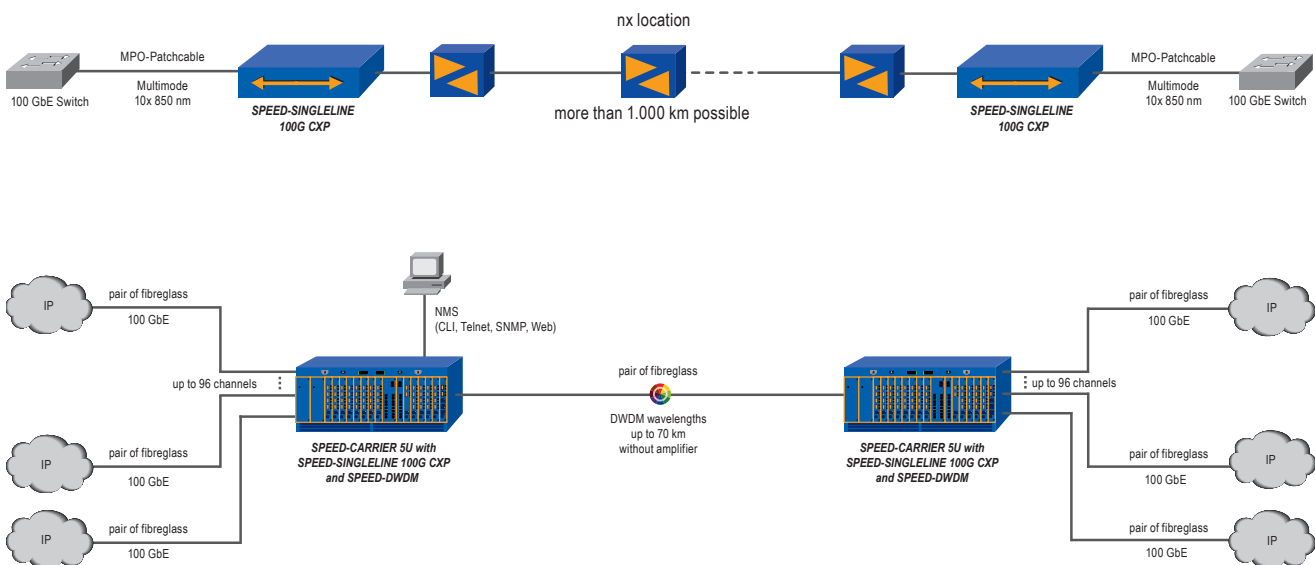


Inhouse
development



- » 100 Gbps multiprotocol multiplexer card
- » Direct Aggregation of 1/10/40 GbE, OTU-2, 1/2/4/8/10 GFC
- » 10 SFP+ client ports for max. bandwidth utilization
- » Tunable coherent 100 Gbps CFP line port with FEC
- » 100 Gbps with 50 GHz grid for up to 96x 100 Gbps per fiber pair
- » Future-proof due to optional use as 100 Gbps transponder card

100 Gbps DWDM Metro Networks for up to 96 wavelengths



With the SPEED-OTS-5000 System existing DWDM networks can be expanded for 100 Gbps connections. Every 100 Gbps multiplexer SPEED-MUX 100G is equipped with 10xSFP+ slots for client ports, which can be directly connected with 1/10 and 40 Gbps Ethernet, 8 Gbps Fibre Channel or STM-64 interfaces. Via the integrated CXP-port the 100 Gbps multiplexer could

be used as 100 Gbps transponder card without changing any insertion cards in case of further network extension. A tunable CFP module allows to connect further 100 Gbps signals to the DWDM network. Depending on the equipped CFP module up to 96 DWDM wavelengths in the 50 GHz grid can be supported. Therefore the connection of 100 Gbps without changes of the

DWDM network infrastructure is possible. Herewith it is possible to transmit 1 Gbps, 10 Gbps and 100 Gbps channels in a mixed operation without needing any „guard bands“. The SPEED-MUX 100G occupies 4 slots of the SPEED-CARRIER 5U and is fully compatible to already installed SPEED-CARRIER 5U racks.

Technical Specifications

General

- Design: 4-slot module card
- Dimensions (H x W x D): 129 x 81 x 190 mm
- Power supply via backplane:
 - AC: Redundant 230V
 - DC: Redundant 48V power supplies in 19"-chassis
- Ambient temperature: 5°C to +35°C
- Storage temperature: 0°C to +60°C
- Humidity: 90% (not condensing)
- LED indication: Device status, optical link, local loops

Specification of the interfaces

- Number of interfaces:
 - 10x SFP+ / 1x CXP+ and 1x CFP ports
- Data rate: 10.3 Gbps
- Protocol: 100 Gigabit Ethernet
- OTN: OTU-4

Test and security features

- Bit-Error-Rate-Test (BERT)
- Loop switching regarding the ports (LOOP)
- Shutting down of client ports at signal loss on line port (LLCF)
- FEC

Management

- Integrated SNMP agent and alarm notification via SNMP trap
- Transceiver management information provided by integrated DMI functions: input/output power, wavelength, data rate, status, supported protocol, operating temperature

Chassis types

- 16 Slot SPEED-CARRIER 5U

Standards

- RoHS- and WEEE-conformity
- EN 60950, 55032 (Class A), 55024
- VDE 0804, ETS 300 019
- "Made in Germany" (design and production)

Ordering options

- SX 100G-CFPR-SFPR-A: SPEED-MUX 100G